

Aaton has combined advanced electronic technique with sophisticated mechanical design to produce the quietest, lowest power, steadiest Super16 camera in existence.

AATON XTR^{prod} *The most sophisticated version of the proven XTR concept.*



XTR^{prod}

Proven XTR Mechanical Concept

Aaton's patented coplanar claw movement and lateral pressure guide provide *superior film steadiness* and crisper images for HDTV origination: film positioning is better than 2.5µm in all three axes.

Hair free gate: a must for Super16 and 16/9 origination, since the frame line is practically non-existent in these formats.

Magnetically driven instant magazine and *twistless loop* insure optimum quietness and no pressure marks nor emulsion pile-up on the most sensitive flat grain films.

Easy to load, there is no critical loop adjustment and no timecode head to clean (time recording is handled in the camera gate)

The concave fiber screen insures maximum crispness for through-the-eyepiece focusing, and the Aatonite frame illumination doesn't wash the screen image nor disturb the operator with non-relevant markings.

Sitting neatly alongside the magazine to maintain the camera's low profile, the **totally incorporated CCD-assist** delivers the clearest pictures ever seen in the 16mm field.



The color CCD-assist features *timecode windows* and *Vite* insertion for direct digital recording on non-linear editing discs. It is designed to directly feed either the Avid® Media Recorder or the Lightworks® Digistation, with 24 and 25 film-image accurate video frames.



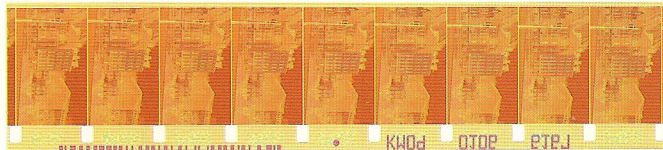
Renowned Aaton Electronics

AatonCode, Aaton's in-camera timecode system, is recorded *markings* in both human readable figures for film editors with automatic Smppte audio sync.

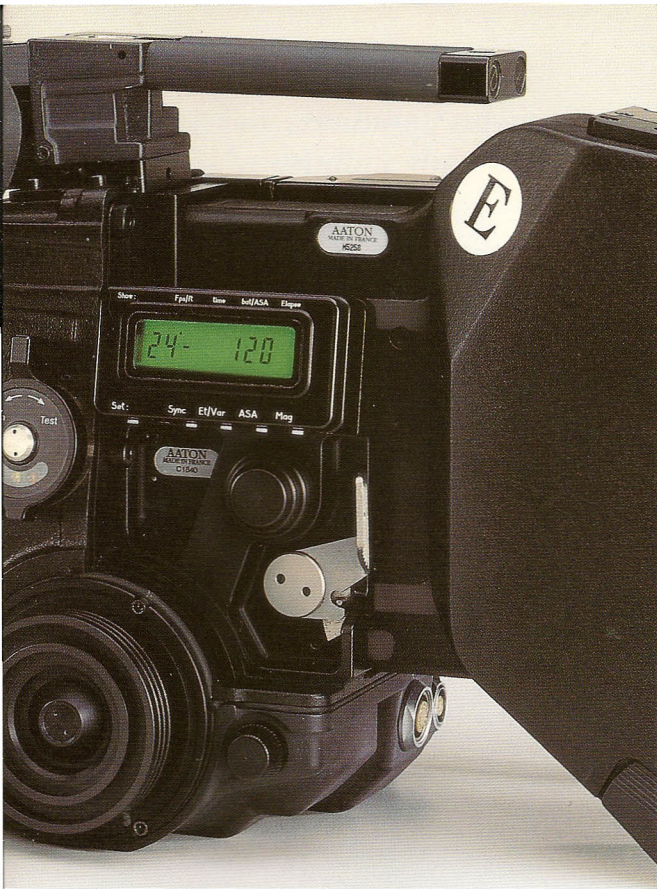
The camera's elaborate back-lighted LCD display monitors setting, battery voltage, magazine remaining footage (with magazines), and last take *elapsed footage*.

A user-friendly *mini-jog* provides quick setting of all controls, offers crystal speeds from 2.000 to 75.000 fps in .001 increments in TV and computer screen filming.

High efficiency switching power amplifiers and latest semiconductor technology achieve a *low power level* never reached before: 600mA at 24 fps.



AatonCode is a means of recording real time in the form of matrix markings, increasing a crew's mobility. Fully compatible with KeyCode markings, it can be recorded on tapes either during telecine transfer or during editing.



Absolute Versatility

Ready to shoot, the *quiet Aaton XTR^{prod}* weighs only 13lbs, allowing for complete mobility in hand-held situations and a freedom to work in the most intimate studio or impractical environments imaginable.

The XTR^{prod} features removable and interchangeable hard fronts to receive all professional lenses. Hard fronts are available for Aaton, Arri PL and Panavision mounts.

The camera can be adjusted for Super16 or St16 centering quickly and easily. The offsettable lens mount, sliding viewfinder and CCD beamsplitter are moved from one preset position to the other in a matter of five minutes.

The three position mirror-shutter is field adjustable to 180° (24 fps / HMI 60Hz), 172.8° (24 fps / HMI 50Hz), 144° (24 fps / Video 60Hz)

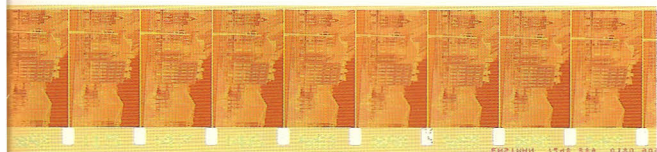
Accessories can be configured in a number of ways, depending upon the application. The body accommodates standard 15mm diameter front rods for hand-held and lightweight work, while supporting standard Arri 19mm bridgeplate and Aaton lateral bracketry systems for studio set-ups.

...rded during film pull-down, providing *frame accurate* ...s and machine readable matrixes for video transfers

...ors running timecode, sync speed, wild speed, ASA ...th footage memory and automatic recognition of seven

...amera functions. The built-in precision speed control ...crements. An internal phase shifter eliminates roll bar

...marium triphase motor technology drive the XTR^{prod} at ...s, and 12V batteries to reach 75 fps!



...xes on the edge of the film, eliminating the need for a slate and ...rkings it insures automatic Smpte synchronisation of audio



A back-lighted full-function LCD display monitors all camera operations: Sync speeds, x-tal controlled wild speeds, ISO selection, battery voltage, magazine remaining footage, last take elapsed footage, time code readout.

Technical specifications

- **Weight:** 6Kg / 13lbs with 400 ft load and 12V on-board battery
- **Power:** 10-14V, 600mA with film at 25°C / 77 °F
- **Temperature range:** -20°C / +4°F to +40°C / +104°F
- **Noise level:** 20 dB -1 / +2
- **Speeds:** from 2.000 to 75.000 fps in 1/1000 fps steps under x-tal control. 24, 25, 29.97, 30, 60 fps preset sync speeds; 12V power supply only.
- **Accessory Inputs:** Amph-9 (video sync), Lemo-6 (power zoom), Lemo-8 (phase controllers) and Lemo-5 (Smpte + RS232 time input)
- **Coplanar Claw and lateral pressure:** Vertical & lateral steadiness to 1/2000 of image dimensions
- **Viewing System:** Interchangeable ground glass - 1.37, 1.66, 1.78 (16/9), 1.85 aspect ratios. Aatonite illuminated markings. Interchangeable eyepiece with hyper-long extension
- **Camera Mounts:** Interchangeable hard fronts: Aaton universal, Arri PL, Panavision
- **Reflex Mirror-shutter:** Three position shutter: 180° (24 fps / HMI 60Hz), 172.8° (24 fps / HMI 50Hz), 144° (24 fps / Video 60Hz)
- **16 / Super16 Operation:** Quick centering of lens axis and viewfinder for either format
- **AatonCode Time Recording:** Matrix recording of man-readable figures and machine readable data. 1/2 frame accuracy over 8 hours internal clock. Smpte and RS232 in. Smpte out through telecine reader.
- **B&W Video Assist:** Low power (170mA) high sensitivity, integrated CCD assist with manual iris
- **Color Video Assist:** High sensitivity, flicker-free. Timecode Windows & Vitc insertion for direct video-assist digital recording and immediate editing
- **Magazine:** 400 ft, instant mag, easy to load, no optical parts to clean
- **LCD Display:** x-tal or wild speeds selection, ISO setting, battery voltage monitoring, remaining footage, elapsed footage, time code readout
- **JOG Control:** Single knob — by clockwise or a-cw rotation — sets all camera parameters and phase shift for TV bar elimination
- **End of Film:** pre-end & end of film warning on the photometer ramp visible in the viewfinder



AATON

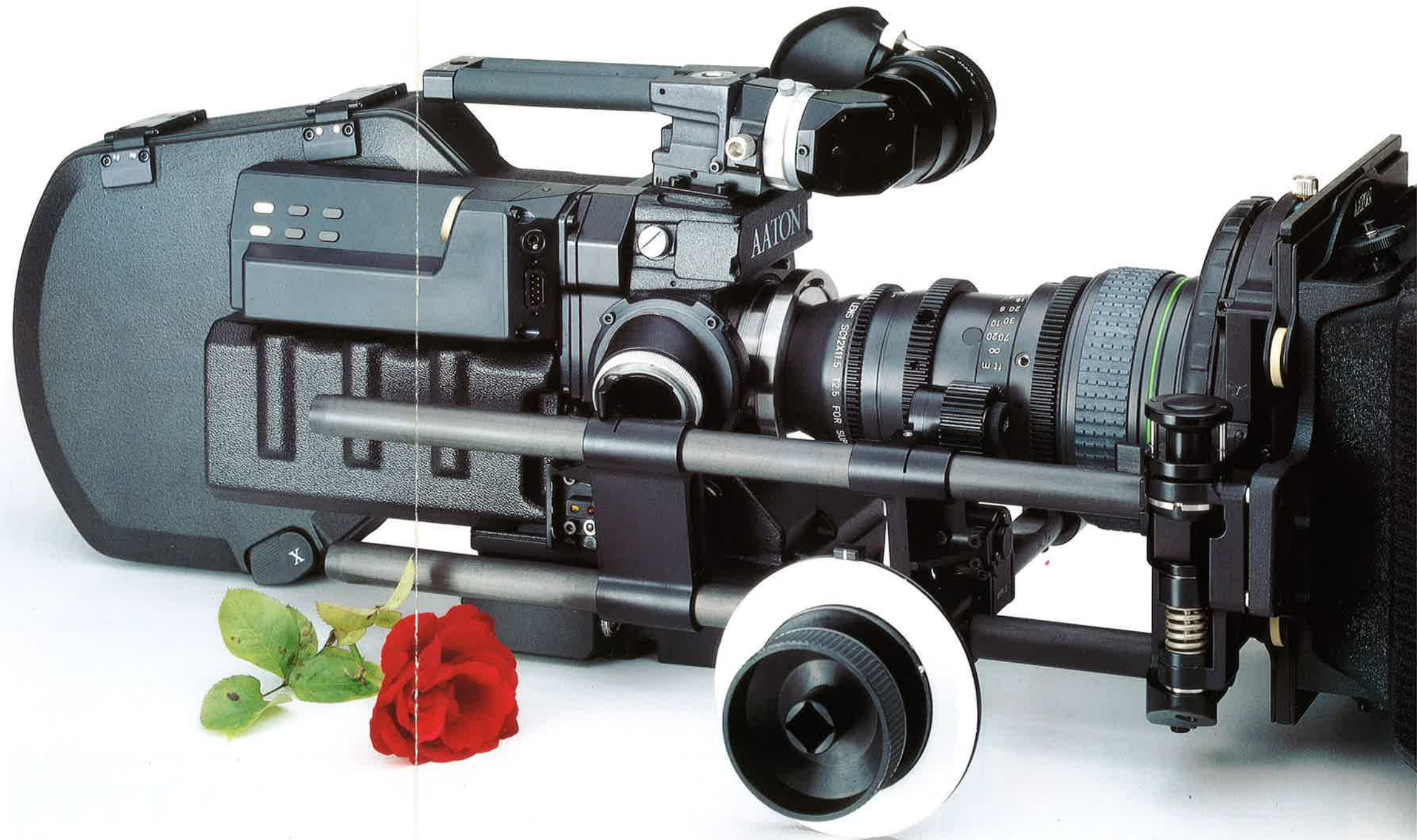
2, rue de la Paix 38000 Grenoble France tel (33) 7642 6409 fax (33) 7651 3491

Technical specifications

- **Weight:** 6Kg / 13lbs with 400 ft load and 12V on-board battery
- **Power:** 10-14V, 600mA with film at 25°C / 77 °F
- **Temperature range:** -20°C / +4°F to +40°C / +104°F
- **Noise level:** 20 dB -1 / +2
- **Speeds:** from 2.000 to 75.000 fps in 1/1000 fps steps under x-tal control. 24, 25, 29.97, 30, 60 fps preset sync speeds; 12V power supply only.
- **Accessory Inputs:** Amph-9 (video sync), Lemo-6 (power zoom), Lemo-8 (phase controllers) and Lemo-5 (Smppte + RS232 time input)
- **Coplanar Claw and lateral pressure:** Vertical & lateral steadiness to 1/2000 of image dimensions
- **Viewing System:** Interchangeable ground glass - 1.37, 1.66, 1.78 (16/9), 1.85 aspect ratios. Aatonite illuminated markings. Interchangeable eyepiece with hyper-long extension
- **Camera Mounts:** Interchangeable hard fronts: Aaton universal, Arri PL, Panavision
- **Reflex Mirror-shutter:** Three position shutter: 180° (24 fps / HMI 60Hz), 172.8° (24 fps / HMI 50Hz), 144° (24 fps / Video 60Hz)
- **16 / Super16 Operation:** Quick centering of lens axis and viewfinder for either format
- **AatonCode Time Recording:** Matrix recording of man-readable figures and machine readable data. 1/2 frame accuracy over 8 hours internal clock. Smppte and RS232 in. Smppte out through telecine reader.
- **B&W Video Assist:** Low power (170mA) high sensitivity, integrated CCD assist with manual iris
- **Color Video Assist:** High sensitivity, flicker-free. Timecode Windows & Vite insertion for direct video-assist digital recording and immediate editing
- **Magazine:** 400 ft, instant mag, easy to load, no optical parts to clean
- **LCD Display:** x-tal or wild speeds selection, ISO setting, battery voltage monitoring, remaining footage, elapsed footage, time code readout
- **JOG Control:** Single knob — by clockwise or a-cw rotation — sets all camera parameters and phase shift for TV bar elimination
- **End of Film:** pre-end & end of film warning on the photometer ramp visible in the viewfinder

Aaton has combined advanced electronic technique with sophisticated mechanical design to produce the quietest, lowest power, steadiest Super16 camera in existence.

AATON XTR^{prod} *The most sophisticated version of the proven XTR concept.*



AATON

2, rue de la Paix 38000 Grenoble France tel (33) 7642 6409 fax (33) 7651 3491

XTR^{prod}

Proven XTR Mechanical Concept

Aaton's patented coplanar claw movement and lateral pressure guide provide *superior film steadiness* and crisper images for HDTV origination: film positioning is better than 2.5µm in all three axes.

Hair free gate: a must for Super16 and 16/9 origination, since the frame line is practically non-existent in these formats.

Magnetically driven instant magazine and *twistless loop* insure optimum quietness and no pressure marks nor emulsion pile-up on the most sensitive flat grain films. Easy to load, there is no critical loop adjustment and no timecode head to clean (time recording is handled in the camera gate)

The concave fiber screen insures maximum crispness for through-the-eyepiece focusing, and the Aatonite frame illumination doesn't wash the screen image nor disturb the operator with non-relevant markings.

Sitting neatly alongside the magazine to maintain the camera's low profile, the *totally incorporated CCD-assist* delivers the clearest pictures ever seen in the 16mm field.



The color CCD-assist features *timecode windows and Vite* insertion for direct digital recording on non-linear editing discs. It is designed to directly feed either the Avid® Media Recorder or the Lightworks® Digistation, with 24 and 25 film-image accurate video frames.



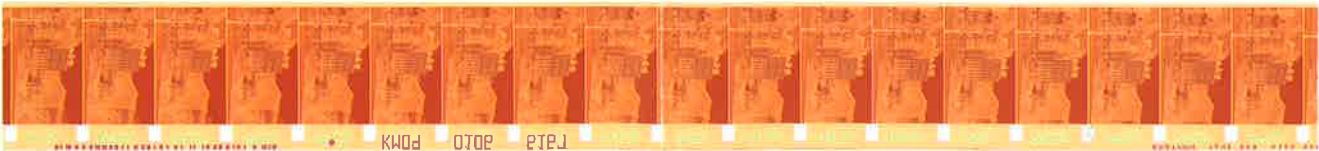
Renowned Aaton Electronics

AatonCode, Aaton's in-camera timecode system, is recorded during film pull-down, providing *frame accurate markings* in both human readable figures for film editors and machine readable matrixes for video transfers with automatic Smpte audio sync.

The camera's elaborate back-lighted LCD display monitors running timecode, sync speed, wild speed, ASA setting, battery voltage, magazine remaining footage (with footage memory and automatic recognition of seven magazines), and last take *elapsed footage*.

A user-friendly *mini-jog* provides quick setting of all camera functions. The built-in precision speed control offers crystal speeds from 2.000 to 75.000 fps in .001 increments. An internal phase shifter eliminates roll bar in TV and computer screen filming.

High efficiency switching power amplifiers and latest samarium triphase motor technology drive the XTR^{prod} at a *low power level* never reached before: 600mA at 24 fps, and 12V batteries to reach 75 fps!



AatonCode is a means of recording real time in the form of matrixes on the edge of the film, eliminating the need for a slate and increasing a crew's mobility. Fully compatible with KeyCode markings it insures automatic Smpte synchronisation of audio tapes either during telecine transfer or during editing.

Absolute Versatility

Ready to shoot, the *quiet Aaton XTR^{prod}* weights only 13lbs, allowing for complete mobility in hand-held situations and a freedom to work in the most intimate studio or impractical environments imaginable.

The XTR^{prod} features removable and interchangeable hard fronts to receive all professional lenses. Hard fronts are available for Aaton, Arri PL and Panavision mounts.

The camera can be adjusted for Super16 or St16 centering quickly and easily. The offsettable lens mount, sliding viewfinder and CCD beamsplitter are moved from one preset position to the other in a matter of five minutes.

The three position mirror-shutter is field adjustable to 180° (24 fps / HMI 60Hz), 172.8° (24 fps / HMI 50Hz), 144° (24 fps / Video 60Hz)

Accessories can be configured in a number of ways, depending upon the application. The body accomodates standard 15mm diameter front rods for hand-held and lightweight work, while supporting standard Arri 19mm bridgeplate and Aaton lateral bracketry systems for studio set-ups.



A back-lighted full-function LCD display monitors all camera operations: Sync speeds, x-tal controlled wild speeds, ISO selection, battery voltage, magazine remaining footage, last take elapsed footage, time code readout.